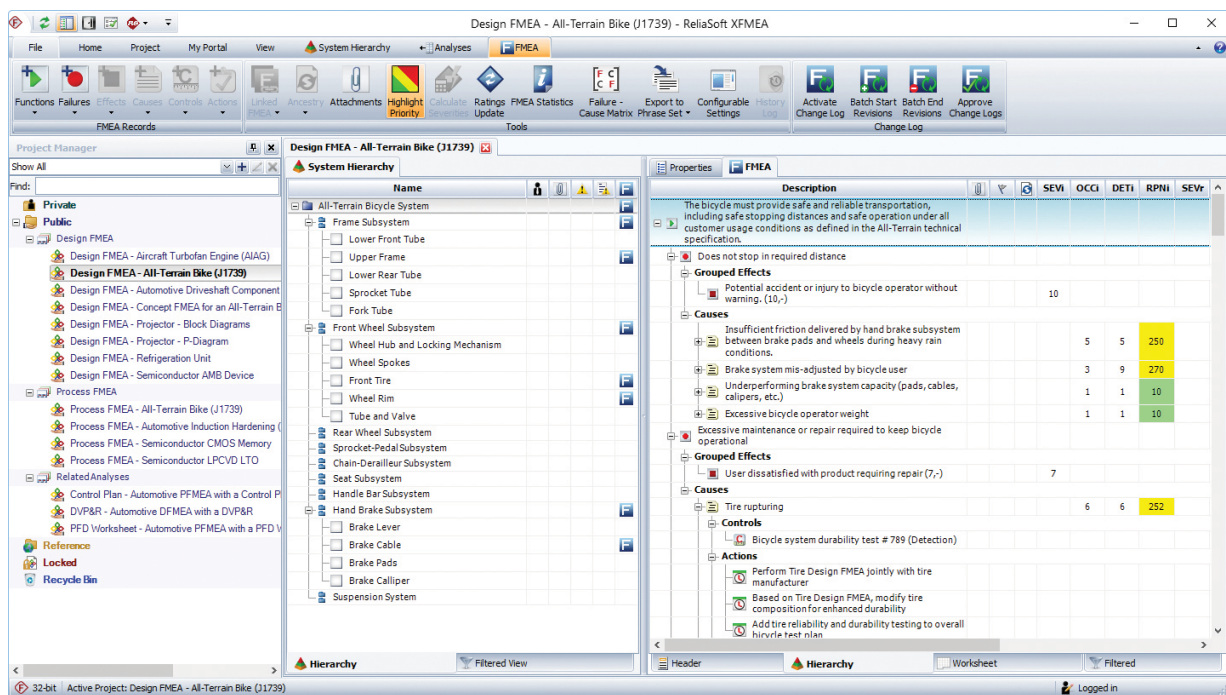


 **XFMEA**

**Expert support for all types of FMEA and FMECA**

ReliaSoft XFMEA facilitates the FMEA/FMECA process and provides flexible data management and reporting capabilities.

The software also provides integrated support for related analyses such as Design Verification Plans (DVP&Rs), Design Reviews Based on Failure Mode (DRBFMs), Process Flow Diagrams (PFD Worksheets) and Control Plans (PCPs) and P-Diagrams.



**Benefits**

- Proactively consider potential failures, prioritize issues based on risk in order to initiate improvements early in development when modifications tend to have the greatest impact for the lowest cost
- Create a keyword-searchable knowledge base of reliability-related information for your designs, which can contribute to the development of test plans, control plans, future design efforts and other activities. The software makes it easy to find and reuse information from existing analyses or predefined libraries
- Establish consistency throughout the organization’s FMEA process and make it easy for multiple users to cooperate on the analyses
- Utilize charts, reports, automated e-mails and other features to use the analysis information in ways that will effectively support decision-making and make sure that corrective actions are implemented

# XFMEA software highlights

## FMEA standards

- AIAG and SAE J1739
- IEC 60812
- ISO 14971
- VDA-4 (German automotive industry)
- MIL-STD-1629A
- Highly configurable to define your own custom profiles

## FMEA types

- Design FMEA (DFMEA)
- Process FMEA (PFMEA)
- System FMEA
- FMECA
- Highly configurable to define your own custom profiles

## Risk assessment methods

- Risk Priority Numbers (RPNs)
- Criticality analysis
- Alpha/Beta ratio criticality worksheet
- Quantitative Consequence Priority Numbers (QCPNs)
- Priority highlights and configurable risk ranking logic
- Multiple severity scores per effect

## Integration with related analyses

- P-Diagrams
- Transfer DFMEA to PFMEA
- DVP&R and test plans
- Control plans
- Process Flow Diagrams and worksheets
- Design Reviews Based on Failure Mode (DRBFM)

## Organization and data structure

- Easy to build system configurations
- 3 Views for data entry
  - Hierarchy (Tree) view
  - Worksheet view
  - Filtered view

## Easy to find and reuse data

- Browse or query to import existing data
- Use keywords to find and import existing record descriptions (including Smart Add tools)
- Copy/paste and drag/drop
- Track ancestry of each record

## Tools and utilities

- Custom query utility
- Customized templates for imports, queries and reports
- Change log
- Analysis planning tool
- Links and attachments
- Find and replace
- Action alerts via e-mail, SMS text message
- Cause and effect diagrams

## Predefined reports

- FMEA/FMECA worksheets
- Control plan worksheets
- DVP&R worksheets
- DRBFM worksheets
- Other tabular reports (e.g., Causes by RPN, Actions by due date, etc.)

## Graphical Charts

- Bar charts (e.g., Top 10 failure modes by RPN, top 5 effects by severity, etc.)

- Pie Charts (e.g., Actions by status, Controls by type, etc.)
- % Reduction in RPN
- Occurrence/Severity Matrix
- FMEA/FMRA dashboards

## Import types

- Microsoft Excel® - build and manage custom templates for import/export
- Import from RCM++, RBI, MPC and XFRACAS

## File output

- Microsoft Excel® and Microsoft Word®
- Easily export to \*.pdf, \*.rtf or \*.html from Word or Excel

## Reliability program integration

- Use published models to define the reliability characteristics of items
- Work with a Failure Modes and Reliability Analysis (FMRA) that is synchronized with BlockSim
- Use FMEA data to build fault trees in BlockSim
- Share system configuration and failure mode data with XFRACAS
- Import data from an MPC analysis
- Push calculated/simulated reliability and availability to metrics

## Available services

- Detailed user documentation
- Practical example files
- Quick tour guide
- Training for theory + software
- Professional consulting services

For more information visit: <http://xfmea.reliasoft.com>

© 2019 HBM Prencscia Inc., at 5210 E. Williams Cir #240, Tucson, Arizona 85711. All Rights Reserved. ReliaSoft®, BlockSim®, XFMEA®, RCM++®, RBI®, MPC™ and XFRACAS® are all trademarks of HBM Prencscia Inc. All other product names, logos, trademarks, and service marks are the property of their respective owners.